



Leaf Remote Setup Guide

Leaf Networks

November 2009

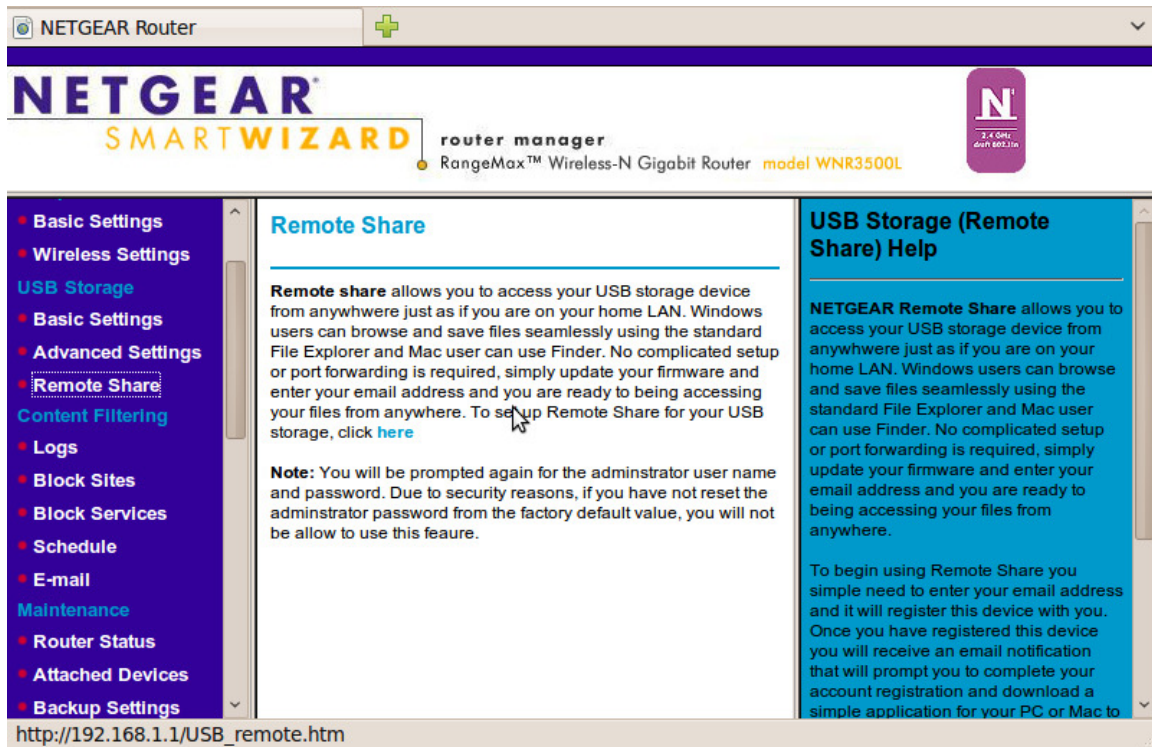
Leaf Remote Setup

1. Download firmware with Leaf Remote enabled:

http://downloads.leafnetworks.net/WNR3500L_11061628-LEAF.chk

If this is the same version but without Leaf Remote enabled, you may see a warning asking if you are sure you want to update to the same version. The internal firmware versions are the same but the one in the above link has Leaf Remote enabled.

2. Once you have loaded the new firmware you will see a new menu option “Remote Share” under “USB Storage.” If you select that option you will see the description of the service; to setup the service, click the “here” link in the page.



The screenshot shows the NETGEAR Router SmartWizard interface. The top navigation bar includes "NETGEAR Router" and a "+" icon. The main header features the "NETGEAR SMARTWIZARD" logo, "router manager", and "RangeMax™ Wireless-N Gigabit Router model WNR3500L". A purple "N" logo with "3.4 GHz 4x4 MIMO" is also visible. The left sidebar contains a menu with "Remote Share" highlighted. The main content area is titled "Remote Share" and contains the following text:

Remote share allows you to access your USB storage device from anywhere just as if you are on your home LAN. Windows users can browse and save files seamlessly using the standard File Explorer and Mac user can use Finder. No complicated setup or port forwarding is required, simply update your firmware and enter your email address and you are ready to being accessing your files from anywhere. To setup Remote Share for your USB storage, click [here](#)

Note: You will be prompted again for the administrator user name and password. Due to security reasons, if you have not reset the administrator password from the factory default value, you will not be allow to use this feaure.

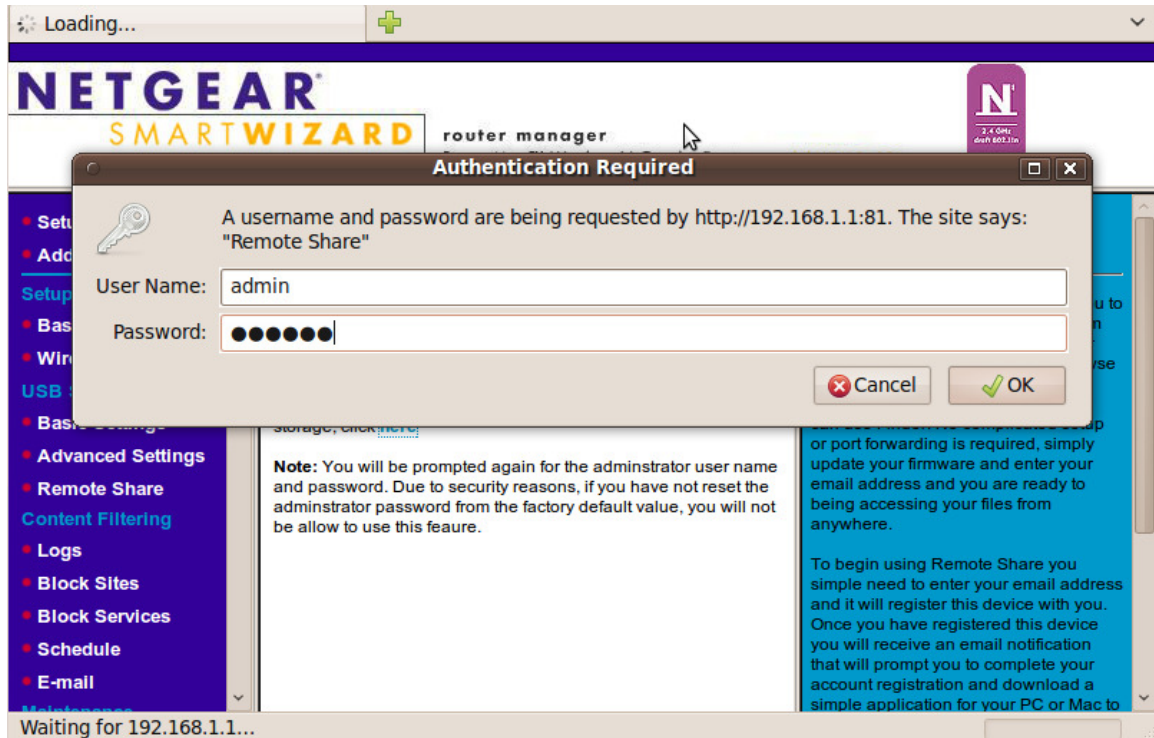
The right sidebar is titled "USB Storage (Remote Share) Help" and contains the following text:

NETGEAR Remote Share allows you to access your USB storage device from anywhere just as if you are on your home LAN. Windows users can browse and save files seamlessly using the standard File Explorer and Mac user can use Finder. No complicated setup or port forwarding is required, simply update your firmware and enter your email address and you are ready to being accessing your files from anywhere.

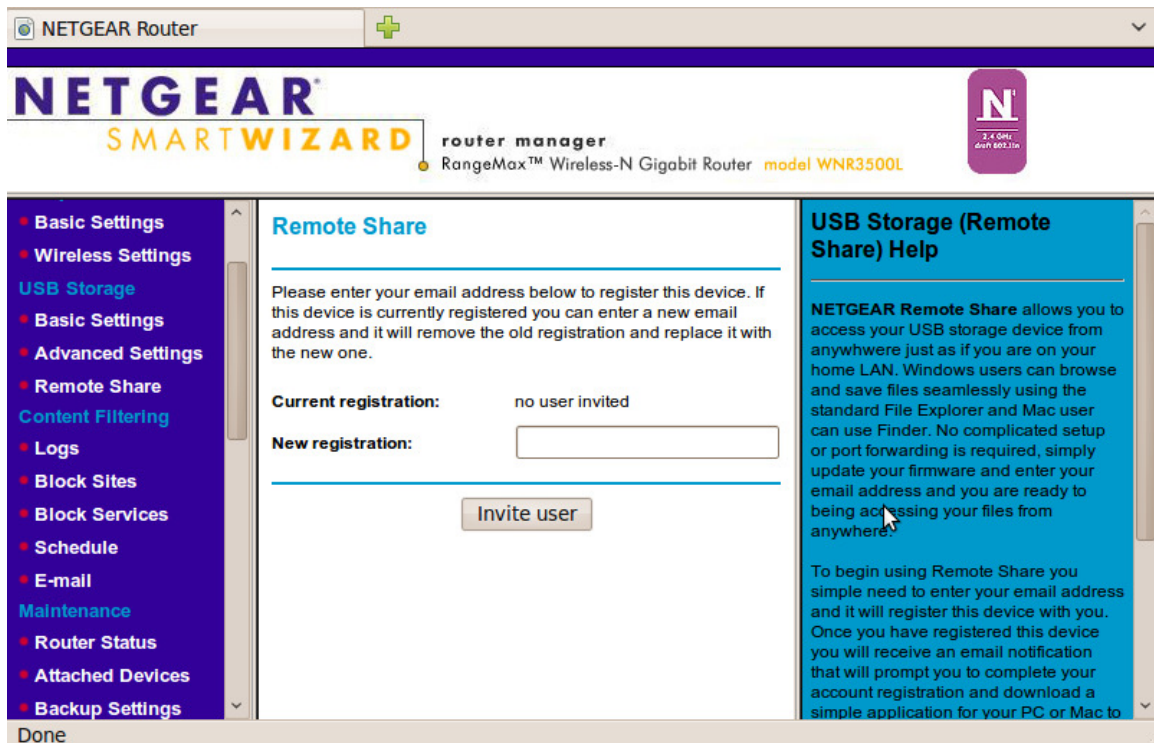
To begin using Remote Share you simple need to enter your email address and it will register this device with you. Once you have registered this device you will receive an email notification that will prompt you to complete your account registration and download a simple application for your PC or Mac to

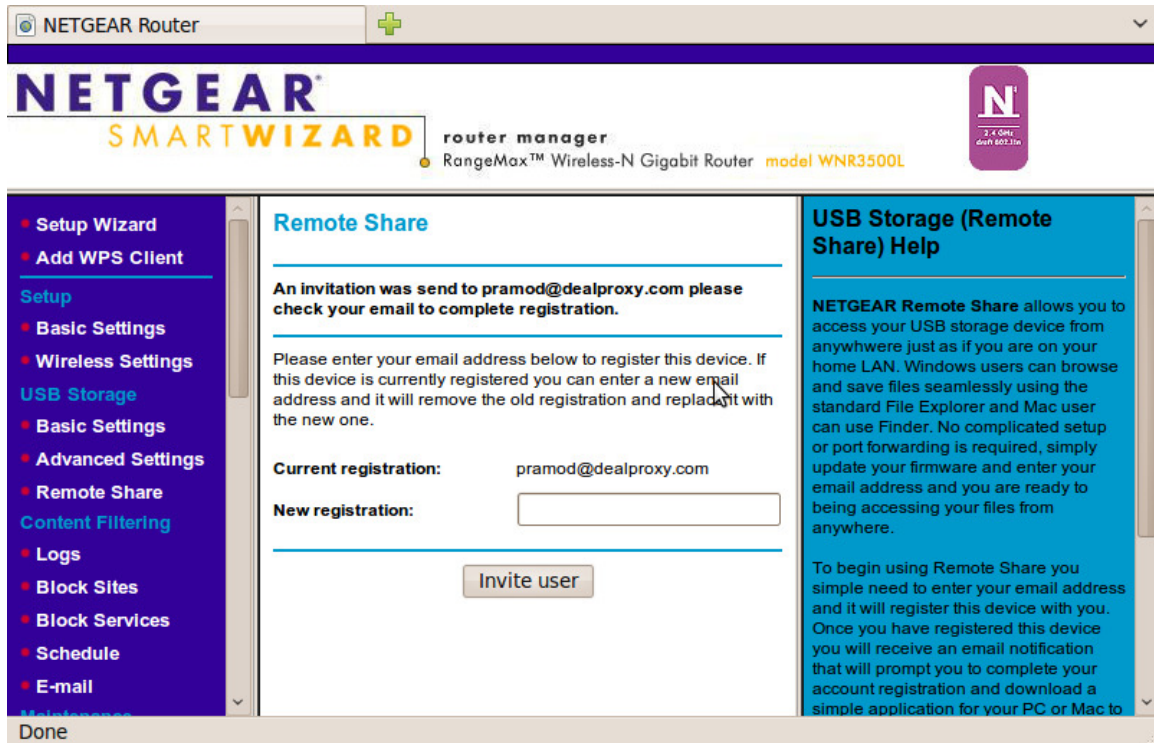
The address bar at the bottom shows "http://192.168.1.1/USB_remote.htm".

3. Once you click the “here” link for security reasons you will be prompted to login as admin. Also, if you have not changed the default password you are required to do so before you can use Leaf Remote.



4. Next you will need to register your remote share. If you are already a ReadyNAS Remote user then you can enter the email address you used to register for ReadyNAS Remote and you can skip to step 12. If you are not a ReadyNAS Remote user then simply enter your email address and press "Invite User."





NETGEAR Router

NETGEAR
SMARTWIZARD router manager
RangeMax™ Wireless-N Gigabit Router model WNR3500L

Remote Share

An invitation was send to pramod@dealproxy.com please check your email to complete registration.

Please enter your email address below to register this device. If this device is currently registered you can enter a new email address and it will remove the old registration and replace it with the new one.

Current registration: pramod@dealproxy.com

New registration:

Invite user

USB Storage (Remote Share) Help

NETGEAR Remote Share allows you to access your USB storage device from anywhere just as if you are on your home LAN. Windows users can browse and save files seamlessly using the standard File Explorer and Mac user can use Finder. No complicated setup or port forwarding is required, simply update your firmware and enter your email address and you are ready to being accessing your files from anywhere.

To begin using Remote Share you simple need to enter your email address and it will register this device with you. Once you have registered this device you will receive an email notification that will prompt you to complete your account registration and download a simple application for your PC or Mac to

5. After you have invited the user to your USB share, they will receive an email to complete registration.

Subject: Leaf Remote Invitation
From: root@remote.readynas.com
Date: Fri, November 6, 2009 4:36 pm
To: pramod@dealproxy.com
Options: [View Full Header](#) | [View Printable Version](#) | [Download this as a file](#) | [Add to Address Book](#)

You have been invited to access Leaf Remote shares. By joining Leaf Remote, you will be able to access Leaf Remote devices as if you were on the same local area network.

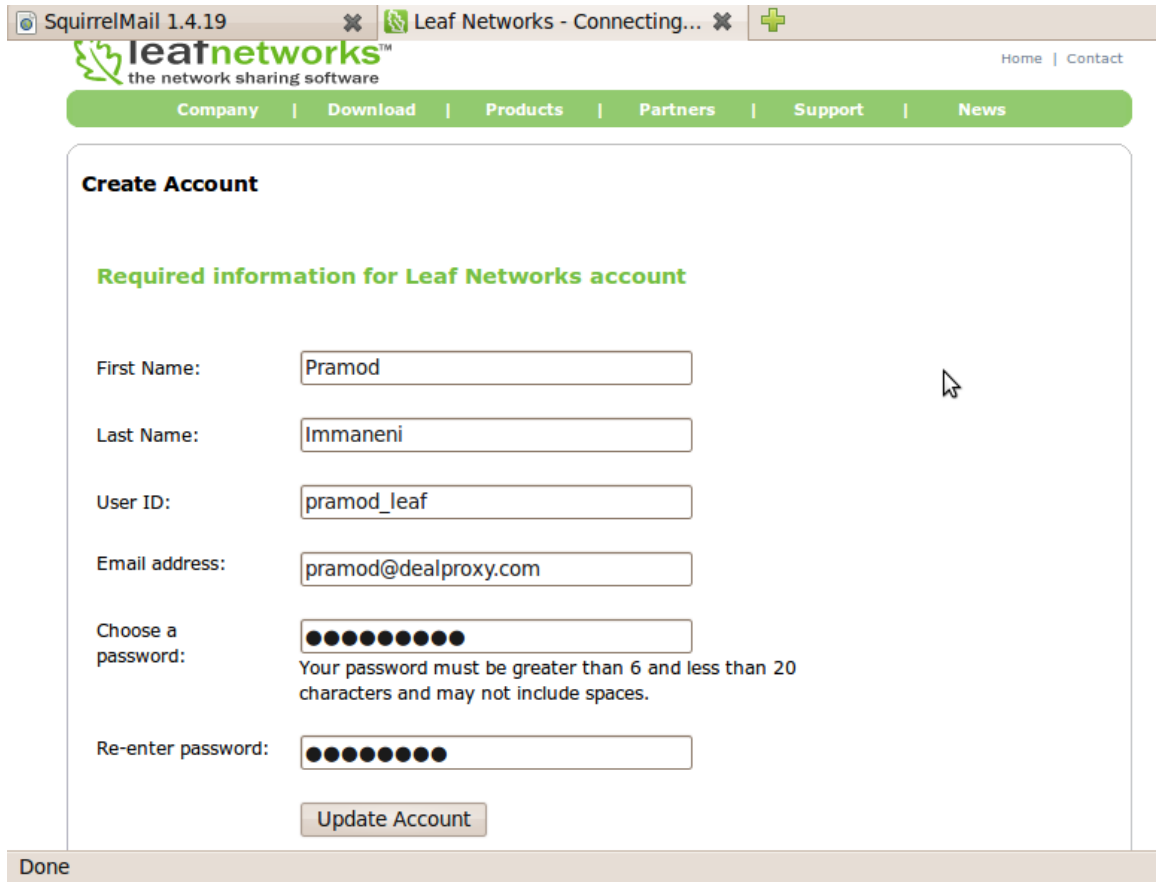
To accept this invitation, please click on the link below to register and install Leaf Remote.

http://www.leafnetworks.net/remote/index.jsp?pid=19&tuid=leafuser_2710&tpwd=12575541680

Thank you,

The Leaf Remote Team.

6. Once you have clicked the link in the email you will need to complete your registration.



The screenshot shows a web browser window with the following elements:

- Browser tabs: SquirrelMail 1.4.19, Leaf Networks - Connecting...
- Page header: leafnetworks™ the network sharing software, Home | Contact
- Navigation menu: Company | Download | Products | Partners | Support | News
- Section: **Create Account**
- Section: **Required information for Leaf Networks account**
- Form fields:
 - First Name:
 - Last Name:
 - User ID:
 - Email address:
 - Choose a password: Your password must be greater than 6 and less than 20 characters and may not include spaces.
 - Re-enter password:
- Submit button:
- Footer: Done

7. After you have completed your registration you will be prompted to download the Windows utility need to remotely access the USB share.

Leaf for Windows XP, Vista and Windows 7

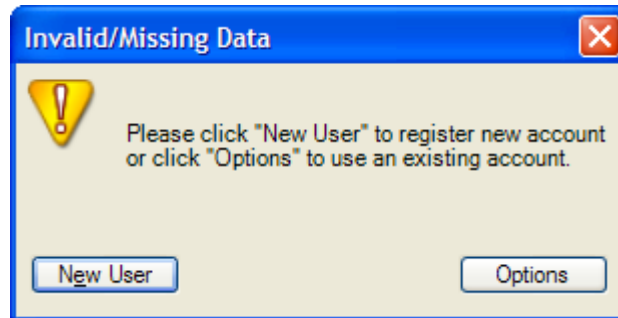
[Download Leaf](#) No spyware, adware or malware.

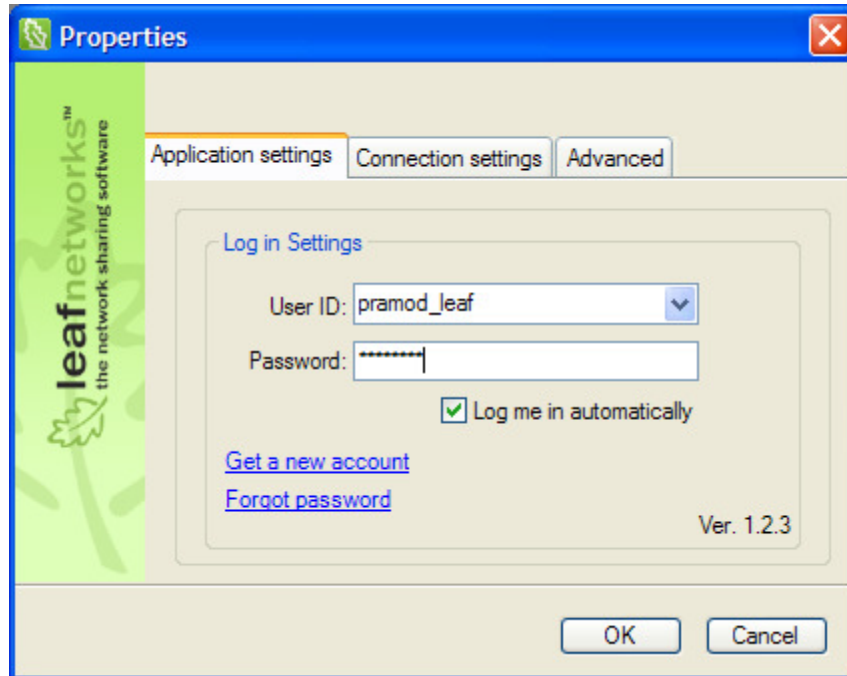


Official release. Version: 1.2.2 Release date: November 2, 2009
File name: LeafRemoteSetup.exe File size: 1.88 MB

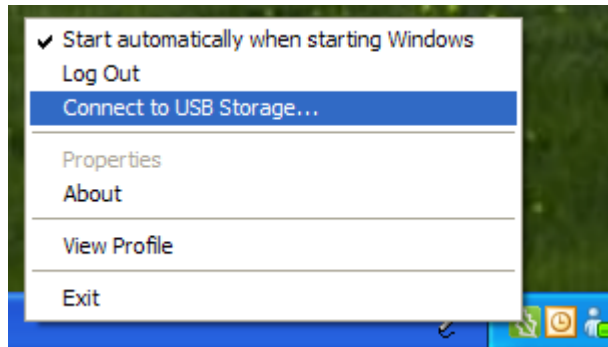
Done

8. After you have downloaded and installed the Leaf Remote utility, the first time it runs it will prompted you to enter the username and password you registered.





9. After you have entered your username and password and logged into the Leaf Remote utility, you will see a icon in your system tray.



10. Once the icon has stopped blinking, you can right click on it and select “Connect to USB Storage...” and then you will see a shortcut to connect to your USB Share.
11. Once you have doubled-clicked this shortcut it will show the USB Share on your WNR3500L.
12. If you entered the email address you used to signup for ReadyNAS Remote, then when you select “Connect to ReadyNAS...” you will see your WNR3500L in the list of devices.



leafnetworks™
the network sharing software